

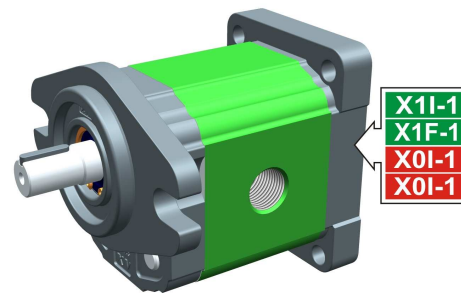
# pompa trascinatrice - serie XV

X1T

POMPA TRASCINATRICE TIPO "SAE AA"  
BASE Ø50.8 - ALBERO CILINDRICO

**X 1 T 25 62 B B B A**

Serie	X	serie XV
Gruppo	1	gruppo 1
Categoria	T	pompa trascinatrice
Cilindrata	25	3.8
Base	62	Ø50.8 SAE AA rotazione destra
Albero	B	CIP02 - Cilindrico Ø12.7 - linguetta sp.3.2 (SAE AA)
Corpo	IN	aspirazione - 3/8" BSP
	OUT	mandata - 3/8" BSP
Coperchio	A	femmina Ø25,4



XT168

Tabella dati tecnici

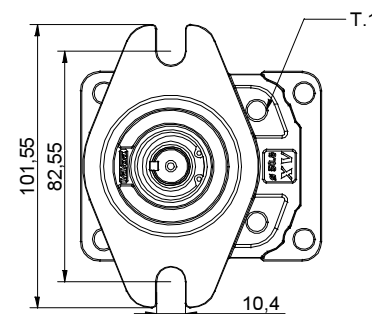
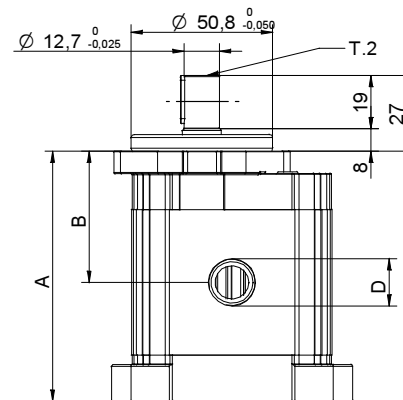
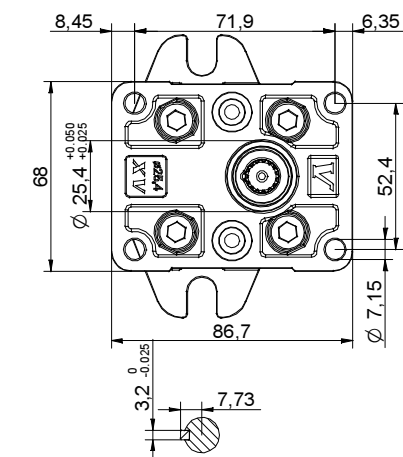
TIPO	Cilindrata cm <sup>3</sup> /giro	Pressione Max.		CODICE				CODICE													
		P1 bar	P3 bar	Rotazione Sinistra				Rotazione destra													
X1T/0.9	0,91	240	280	X	1	T	16	61	B	B	B	A	X	1	T	16	62	B	B	B	A
X1T/1.2	1,17	250	290	X	1	T	17	61	B	B	B	A	X	1	T	17	62	B	B	B	A
X1T/1.7	1,56	250	290	X	1	T	18	61	B	B	B	A	X	1	T	18	62	B	B	B	A
X1T/2.2	2,08	250	290	X	1	T	20	61	B	B	B	A	X	1	T	20	62	B	B	B	A
X1T/2.6	2,60	250	300	X	1	T	21	61	B	B	B	A	X	1	T	21	62	B	B	B	A
X1T/3.2	3,12	250	300	X	1	T	23	61	B	B	B	A	X	1	T	23	62	B	B	B	A
X1T/3.8	3,64	250	300	X	1	T	25	61	B	B	B	A	X	1	T	25	62	B	B	B	A
X1T/4.3	4,16	250	300	X	1	T	27	61	B	B	B	A	X	1	T	27	62	B	B	B	A
X1T/4.9	4,94	250	300	X	1	T	29	61	B	B	B	A	X	1	T	29	62	B	B	B	A
X1T/5.9	5,85	250	300	X	1	T	31	61	B	B	B	A	X	1	T	31	62	B	B	B	A
X1T/6.5	6,50	250	300	X	1	T	32	61	B	B	B	A	X	1	T	32	62	B	B	B	A
X1T/7.8	7,54	220	260	X	1	T	34	61	B	B	B	A	X	1	T	34	62	B	B	B	A
X1T/9.8	9,88	190	230	X	1	T	36	61	B	B	B	A	X	1	T	36	62	B	B	B	A

P1) Pressione max. di esercizio - P3) Pressione max. di picco

Per applicazioni gravose si consiglia di verificare la coppia ammissibile dell'albero

Tabella dimensioni

TIPO	Peso	A	B	D	D
	kg	mm	mm	IN	OUT
X1T/0.9	1,000	79,0	41,8	3/8" BSPP	3/8" BSPP
X1T/1.2	1,020	80,0	42,3	3/8" BSPP	3/8" BSPP
X1T/1.7	1,060	81,5	43,0	3/8" BSPP	3/8" BSPP
X1T/2.2	1,080	83,5	44,0	3/8" BSPP	3/8" BSPP
X1T/2.6	1,110	85,5	45,0	3/8" BSPP	3/8" BSPP
X1T/3.2	1,140	87,5	46,0	3/8" BSPP	3/8" BSPP
X1T/3.8	1,170	89,5	47,0	3/8" BSPP	3/8" BSPP
X1T/4.3	1,220	91,5	48,0	3/8" BSPP	3/8" BSPP
X1T/4.9	1,250	94,5	49,5	3/8" BSPP	3/8" BSPP
X1T/5.9	1,310	98,0	51,3	3/8" BSPP	3/8" BSPP
X1T/6.5	1,350	100,5	52,5	3/8" BSPP	3/8" BSPP
X1T/7.8	1,410	104,5	54,5	3/8" BSPP	3/8" BSPP
X1T/9.8	1,550	113,5	59,0	3/8" BSPP	3/8" BSPP



010/0/08 XT12562888A.dft



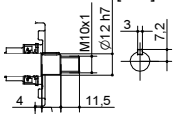
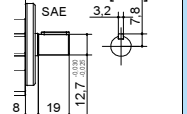
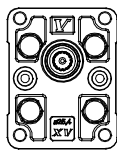
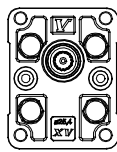
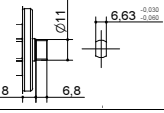
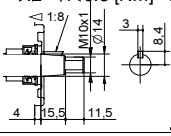
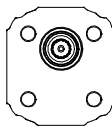
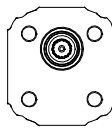
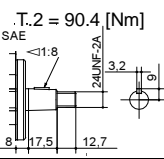
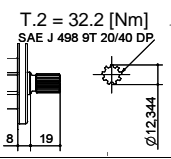
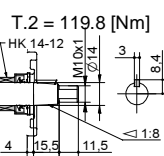
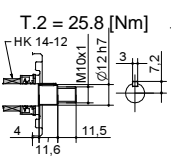
T.1 = 24.5÷29.4 [Nm] - coppia di serraggio viti M8

T.2 = 32.8 [Nm] - coppia ammissibile dell'albero (N.B. Per la scelta dell'albero verificare sempre la coppia ammissibile).

# Tavola delle varianti

**X1T**

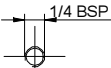
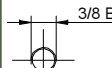
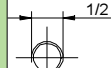
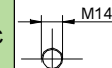
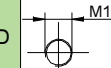
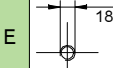
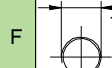
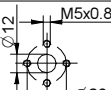
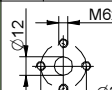
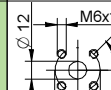
BASE  $\varnothing 50.8$  "SAE AA"

BASE $\varnothing 50.8$ "SAE AA"		Albero		Coperchio				
Rotazione Sinistra	Rotazione destra			Rotazione Sinistra	Rotazione destra			
		CIP01 - Cilindrico T.2 = 25.8 [Nm] 	A	CIP02 - Cilindrico T.2 = 32.8 [Nm] SAE 	B			A
	61							
	62							
		CFP03 - Codolo fresato T.2 = 25.9 [Nm] SAE 	E	COP02 - Conico T.2 = 119.8 [Nm] 	G			D
		CO004 - Conico T.2 = 90.4 [Nm] SAE 	I	SCF05 - Scanalato T.2 = 32.2 [Nm] SAE J 498 9T 20/40 DP 	K			
		COP02+HK - Conico T.2 = 119.8 [Nm] HK 14-12 	O	CI001+HK - Cilindrico T.2 = 25.8 [Nm] HK 14-12 	P			

Cilindrata	
TIPO	CODICE
X1T/0.9	16
X1T/1.2	17
X1T/1.7	18
X1T/2.2	20
X1T/2.6	21
X1T/3.2	23
X1T/3.8	25
X1T/4.3	27
X1T/4.9	29
X1T/5.9	31
X1T/6.5	32
X1T/7.8	34
X1T/9.8	36

Corpi standard							
Cilindrata	cm3/giro	Filettature standard					
		0.9	I - I	B - B	J - J	B - Z	Z - Z
1.2	I - I	B - B	J - J	B - Z	Z - Z	G - F	
1.7	I - I	B - B	J - J	B - Z	Z - Z	G - F	
2.2	I - I	B - B	J - J	B - Z	Z - Z	G - F	
2.6	I - I	B - B	J - J	B - Z	Z - Z	G - F	
3.2	I - I	B - B	J - J	B - Z	Z - Z	G - F	
3.8	I - I	B - B	J - J	B - Z	Z - Z	G - F	
4.3	I - I	B - B	J - J	B - Z	Z - Z	G - F	
4.9	I - I	B - B	J - J	B - Z	Z - Z	G - F	
5.9	I - I	B - B	J - J	B - Z	Z - Z	G - F	
6.5	I - I	B - B	J - J	B - Z	Z - Z	G - F	
7.8	I - I	B - B	J - J	B - Z	Z - Z	G - F	
9.8	I - I	B - B	J - J	B - Z	Z - Z	G - F	

Tabella con indicate le combinazioni delle flangiature e filettature standard disponibili a magazzino

Corpo (filettature e flangiature)													
	A		B		C		D		E		F		G
	H		I		J	Corpo Chiuso	Z						