

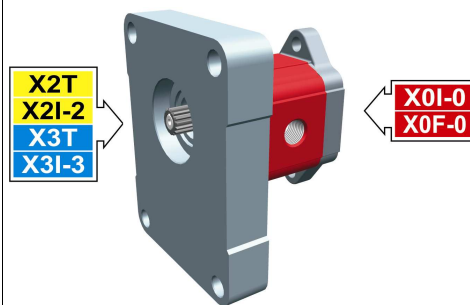
# pompa intermedia - serie XV

X0I-2

POMPA INTERMEDIA ACCOPPIABILE CON XV2  
BASE Ø36,5 FEMMINA

**X 0 I 06 42 A B B A**

Serie	X	serie XV
Gruppo	0	gruppo 0
Categoria	I	pompa intermedia
Cilindrata	06	0.76
Base	42	Ø36.5 femmina rotazione destra 2P+0P, 3P+0P
Albero	A	CIP01 - Intermedio per 1+0 - 2+0 (Cilindrico ø7 - M7x1 - linguetta sp.2)
Corpo	IN	aspirazione - 1/4" BSP
	OUT	mandata - 1/4" BSP
Coperchio	A	femmina ø22



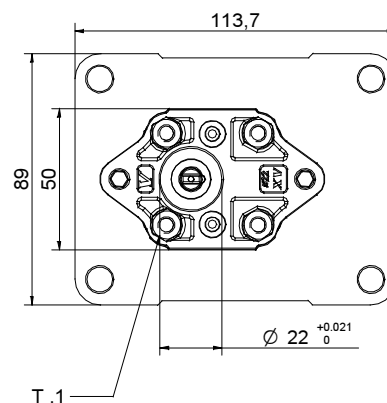
XI004

Tabella dati tecnici

TIPO	Cilindrata cm3/giro	Pressione Max.		CODICE	
		P1 bar	P3 bar	Rotazione Sinistra	Rotazione destra
X0I-2/0.17	0,16	220	260	X 0 I 01 41 A B B A	X 0 I 01 42 A B B A
X0I-2/0.25	0,24	220	260	X 0 I 02 41 A B B A	X 0 I 02 42 A B B A
X0I-2/0.45	0,45	220	280	X 0 I 04 41 A B B A	X 0 I 04 42 A B B A
X0I-2/0.57	0,56	220	280	X 0 I 05 41 A B B A	X 0 I 05 42 A B B A
X0I-2/0.76	0,75	220	280	X 0 I 06 41 A B B A	X 0 I 06 42 A B B A
X0I-2/0.98	0,92	220	280	X 0 I 07 41 A B B A	X 0 I 07 42 A B B A
X0I-2/1.27	1,26	220	280	X 0 I 09 41 A B B A	X 0 I 09 42 A B B A
X0I-2/1.52	1,48	220	280	X 0 I 11 41 A B B A	X 0 I 11 42 A B B A
X0I-2/2.30	2,28	190	210	X 0 I 13 41 A B B A	X 0 I 13 42 A B B A

P1) Pressione max. di esercizio - P3) Pressione max. di picco

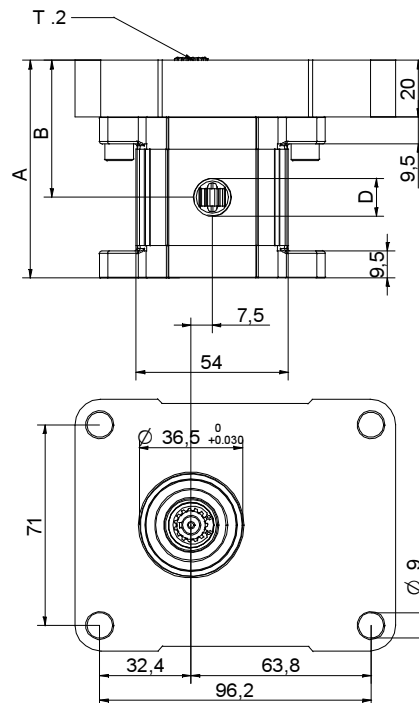
Per applicazioni gravose si consiglia di verificare la coppia ammissibile dell'albero



T.1

Tabella dimensioni

TIPO	Peso kg	A	B	D	D
		mm	mm	IN	OUT
X0I-2/0.17	0,400	72,3	46,2	1/4" BSPP	1/4" BSPP
X0I-2/0.25	0,410	72,9	46,5	1/4" BSPP	1/4" BSPP
X0I-2/0.45	0,420	74,5	47,3	1/4" BSPP	1/4" BSPP
X0I-2/0.57	0,430	75,5	47,8	1/4" BSPP	1/4" BSPP
X0I-2/0.76	0,440	77,0	48,5	1/4" BSPP	1/4" BSPP
X0I-2/0.98	0,460	78,5	49,3	1/4" BSPP	1/4" BSPP
X0I-2/1.27	0,480	81,0	50,5	1/4" BSPP	1/4" BSPP
X0I-2/1.52	0,500	83,0	51,5	1/4" BSPP	1/4" BSPP
X0I-2/2.30	0,560	89,0	54,5	1/4" BSPP	1/4" BSPP



T.2

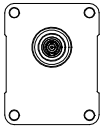
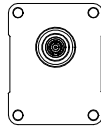
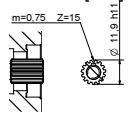




T.1 = 11.7÷13.7 [Nm] - coppia di serraggio viti M6

T.2 = 2.1 [Nm] - coppia ammissibile dell'albero (N.B. Per la scelta dell'albero verificare sempre la coppia ammissibile).

# Tavola delle varianti

**XO1-2**

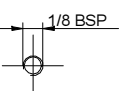
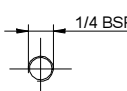
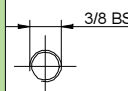
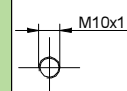
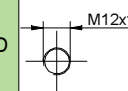
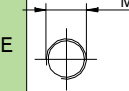
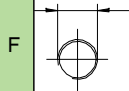
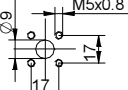
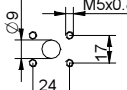
**BASE ø36,5 Femmina**

BASE ø36,5 Femmina		Albero		Coperchio	
Rotazione Sinistra	Rotazione destra			Rotazione Sinistra	Rotazione destra
		CIP01 - Cilindrico T.2 = 2.1 [Nm] 			
41	42	A		A	A
					
				D	D

Cilindrata	
TIPO	CODICE
XO1-2/0.17	<b>01</b>
XO1-2/0.25	<b>02</b>
XO1-2/0.45	<b>04</b>
XO1-2/0.57	<b>05</b>
XO1-2/0.76	<b>06</b>
XO1-2/0.98	<b>07</b>
XO1-2/1.27	<b>09</b>
XO1-2/1.52	<b>11</b>
XO1-2/2.30	<b>13</b>

Corpi standard	
Cilindrata	cm3/girolettature standard
0.17	B - B
0.25	B - B
0.45	B - B
0.57	B - B
0.76	B - B
0.98	B - B
1.27	B - B
1.52	B - B
2.30	B - B

Tabella con indicate le combinazioni delle flangiature e filettature standard disponibili a magazzino

Corpo (filettature e flangiature)													
	A		B		C		D		E		F		G
	H		I	Corpo Chiuso		Z							