

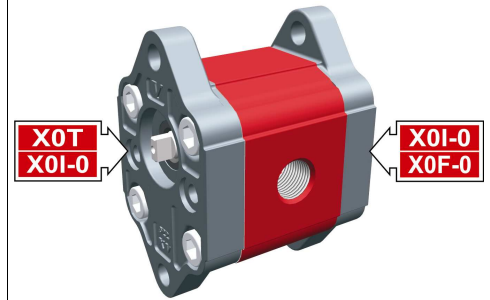
# pompa intermedia - serie XV

POMPA INTERMEDIA STANDARD  
BASE Ø22 FEMMINA

XOI-O

**X O I 06 22 M B B A**

Serie	X	serie XV
Gruppo	0	gruppo 0
Categoria	I	pompa intermedia
Cilindrata	06	0.76
Base	22	Ø22 femmina rotazione destra 0P+0P
Albero	M	CFI01 - Intermedio - (codolo fresato ø7 - sp.3)
Corpo	IN	aspirazione - 1/4" BSP
	OUT	mandata - 1/4" BSP
Coperchio	A	femmina ø22



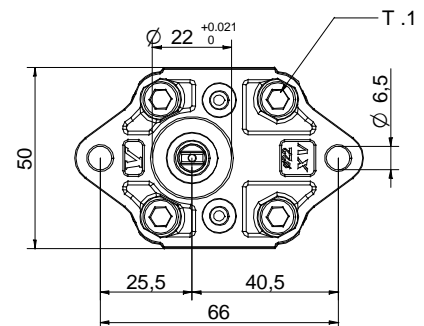
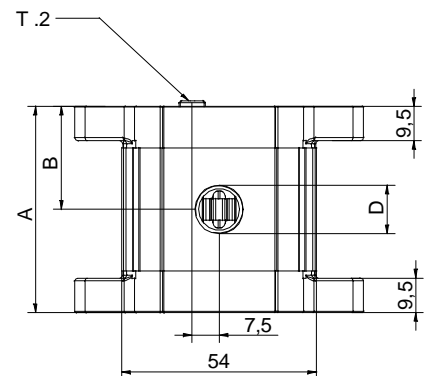
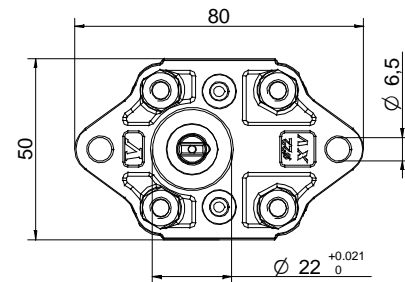
XI001

Tabella dati tecnici

TIPO	Cilindrata cm3/giro	Pressione Max.		CODICE															
		P1 bar	P3 bar	Rotazione Sinistra		Rotazione destra													
XOI-0/0.17	0,16	220	260	X	O	I	01 21	M	B	B	A	X	O	I	01 22	M	B	B	A
XOI-0/0.25	0,24	220	260	X	O	I	02 21	M	B	B	A	X	O	I	02 22	M	B	B	A
XOI-0/0.45	0,45	220	280	X	O	I	04 21	M	B	B	A	X	O	I	04 22	M	B	B	A
XOI-0/0.57	0,56	220	280	X	O	I	05 21	M	B	B	A	X	O	I	05 22	M	B	B	A
XOI-0/0.76	0,75	220	280	X	O	I	06 21	M	B	B	A	X	O	I	06 22	M	B	B	A
XOI-0/0.98	0,92	220	280	X	O	I	07 21	M	B	B	A	X	O	I	07 22	M	B	B	A
XOI-0/1.27	1,26	220	280	X	O	I	09 21	M	B	B	A	X	O	I	09 22	M	B	B	A
XOI-0/1.52	1,48	220	280	X	O	I	11 21	M	B	B	A	X	O	I	11 22	M	B	B	A
XOI-0/2.30	2,28	190	210	X	O	I	13 21	M	B	B	A	X	O	I	13 22	M	B	B	A

P1) Pressione max. di esercizio - P3) Pressione max. di picco

Per applicazioni gravose si consiglia di verificare la coppia ammissibile dell'albero



31/03/08 XOI0622MBAdff





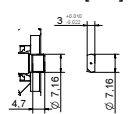


Tabella dimensioni

TIPO	Peso kg	A	B	D	
		mm	mm	IN	OUT
XOI-0/0.17	0,400	52,3	26,2	1/4" BSPP	1/4" BSPP
XOI-0/0.25	0,410	52,9	26,5	1/4" BSPP	1/4" BSPP
XOI-0/0.45	0,420	54,5	27,3	1/4" BSPP	1/4" BSPP
XOI-0/0.57	0,430	55,5	27,8	1/4" BSPP	1/4" BSPP
XOI-0/0.76	0,440	57,0	28,5	1/4" BSPP	1/4" BSPP
XOI-0/0.98	0,460	58,5	29,3	1/4" BSPP	1/4" BSPP
XOI-0/1.27	0,480	61,0	30,5	1/4" BSPP	1/4" BSPP
XOI-0/1.52	0,500	63,0	31,5	1/4" BSPP	1/4" BSPP
XOI-0/2.30	0,560	69,0	34,5	1/4" BSPP	1/4" BSPP

T.1 = 11.7÷13.7 [Nm] - coppia di serraggio viti M6

T.2 = 3.7 [Nm] - coppia ammissibile dell'albero (N.B. Per la scelta dell'albero verificare sempre la coppia ammissibile).

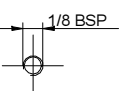
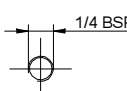
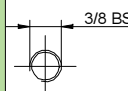
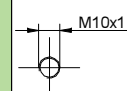
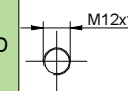
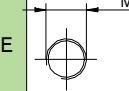
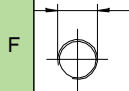
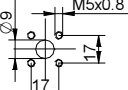
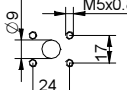
## BASE ø22 Femmina Standard

BASE ø22 Femmina Standard		Albero		Coperchio			
Rotazione Sinistra	Rotazione destra			Rotazione Sinistra	Rotazione destra		
	21		22	CFI01 - Codolo fresato - T.2 = 3.7 [Nm]			A
					M		
							D

Cilindrata	
TIPO	CODICE
XOI-0/0.17	01
XOI-0/0.25	02
XOI-0/0.45	04
XOI-0/0.57	05
XOI-0/0.76	06
XOI-0/0.98	07
XOI-0/1.27	09
XOI-0/1.52	11
XOI-0/2.30	13

Corpi standard	
Cilindrata	cm3/girolettature standard
0.17	B - B
0.25	B - B
0.45	B - B
0.57	B - B
0.76	B - B
0.98	B - B
1.27	B - B
1.52	B - B
2.30	B - B

Tabella con indicate le combinazioni delle flangiature e filettature standard disponibili a magazzino

Corpo (filettature e flangiature)													
	A		B		C		D		E		F		G
	H		I	Corpo Chiuso	Z								