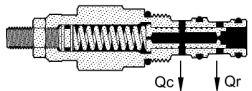
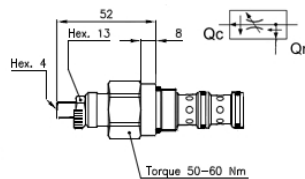
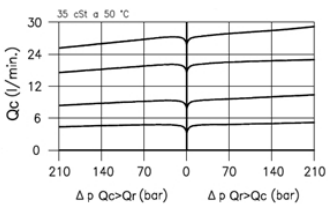


**Valvola "DPC 30" a tre vie compensata prioritaria.**

Mantiene costante la portata regolata sulla linea Qc indipendentemente dalla pressione. La portata eccedente (Qr) può essere utilizzata come seconda utenza o inviata allo scarico.



Keep Qc line flow rate constant independently from the oil pressure. The exceeding flow rate (Qr) can be used for a second function or sent to the tank.

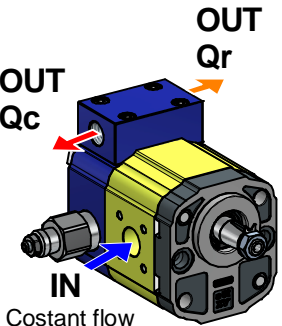
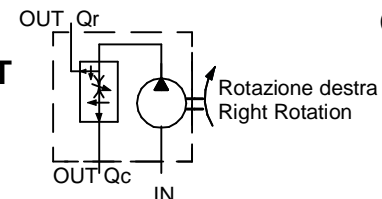
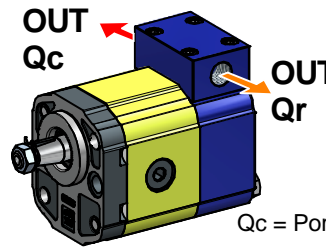


**Caratteristiche tecniche - Technical features**

Portata max. Max. inlet flow	60 l/min
Pressione max. i Max. pressure	315 bar
Campo di viscosità del fluido Fluid viscosity range	2,8 ÷ 380 cSt
Campo temperatura del fluido Fluid temperature range	-20 ÷ +80 °C
Temperatura limite per guarnizioni Temperature limit for seals	-35 ÷ +110 °C

Fluido idraulico; olio minerale HM e HV sec. ISO 6074  
 Filtraggio richiesto; 19/15 ISO 4466 (25 μ assoluti)  
 Recommended filtration; 19/15 ISO 4466 (25 μ absolutes)  
 Guarnizioni standard in Poliuretano e Buna N  
 Standard seals in Polyurethane and Buna N

Qc Flow			Qc Flow		
Tipo Type	Campo di taratura ± 10% Setting range ± 10%	CODE	Tipo Type	Campo di taratura ± 10% Setting range ± 10%	CODE
DPC 30/U	3 ÷ 6 l/min	CAU	DPC 30/Q	25 ÷ 45 l/min	CAU
DPC 30/D	6 ÷ 11 l/min	CAD			
DPC 30/Z	8 ÷ 16 l/min	CAZ			
DPC 30/T	13 ÷ 25 l/min	CAT			



Qc = Portata costante regolabile / Adjustable Costant flow  
 Qr = Portata residua / Exceeding flow

TIPO TYPE	Cilindrata cm <sup>3</sup> /giro Displacement cm <sup>3</sup> /rev	A	B	C	Pressione Max. bar Max. Pressure bar		Velocità Max. giri/min Max. Speed rpm	Codice / Code : Rotazione Sinistra Left Rotation	Codice / Code : Rotazione Destra Right Rotation
					P1	P3			
XV 2P/6	6	39,6	113,5	91	260	300	3500	X2P 43 11 F SZ X CA-	X2P 43 12 F SZ X CA-
XV 2P/9	8,4	40,6	117,5	95	260	300	3500	X2P 45 11 F SZ X CA-	X2P 45 12 F SZ X CA-
XV 2P/11	10,8	45	121,5	99	260	300	3500	X2P 47 11 F SZ X CA-	X2P 47 12 F SZ X CA-
XV 2P/14	14,4	45	127,5	105	250	290	3500	X2P 49 11 F SZ X CA-	X2P 49 12 F SZ X CA-
XV 2P/17	16,8	45	131,5	109	230	270	3500	X2P 51 11 F SZ X CA-	X2P 51 12 F SZ X CA-
XV 2P/19	19,2	45	135,5	113	210	250	3000	X2P 53 11 F SZ X CA-	X2P 53 12 F SZ X CA-



VIVOIL OLEODINAMICA VIVOLO s.r.l.  
 Società a Socio Unico  
 www.vivoil.com  
 BUDRIO (BOLOGNA) ITALY  
 Tel +39 051.803689 Fax +39 051.800061

**POMPA UNIDIREZIONALE GRUPPO 2 CON VALVOLA PRIORITARIA**

-  
 -

Disegno: **X2P--12FSZ.CA-**  
 Data - Emissione: 21/10/2013 - R1